

LEV TExT Service Providers

What duty holders should expect

ADRIAN SIMS

CEng. BSc. (Hons) CoC (Control) FFOH(S) FILEVE FCIBSE FIPlantE

Adrian Sims

- Co-organiser of the **LEV Conference**
- Sit on **Building Engineering Services Association** Council
 - Ventilation Technical Committee
- Trustee of **The LEV Association**
- MD **Vent-Tech Ltd**

From you...

- Commissioning reports
- COSHH Regulation 6 Risk Assessment
- Safety Data Sheets
- Training logs
- System Logbook
- Permission to take photos

From you...

- Commissioning reports
- COSHH Regulation 6 Risk Assessment
- Safety Data Sheets
- Training logs
- System Logbook
- Permission to take photos

Allows them to...

- Access requirements
- Special tools or test equipment
- PPE requirements
- Assess time

What they should provide you...

- Methodology

What they should provide you...

- Methodology
- Evidence of
- Testing similar systems

What they should provide you...

- Methodology
- Evidence of
- Testing similar systems
- Competency



What they should provide you...

- Methodology

- Evidence of

- Testing similar systems

- Competency

- Insurance

What they should provide you...

- Methodology

- Evidence of

- Testing similar systems

- Competency

- Insurance

- RAMS

What to expect in ahead of the day...

You should be provided with detail of...

- Date of the appointment
- Who is attending and what time
- What systems they are going to be testing and in what order
- What do they need from yourselves

On the day...

Three stages of TExT...

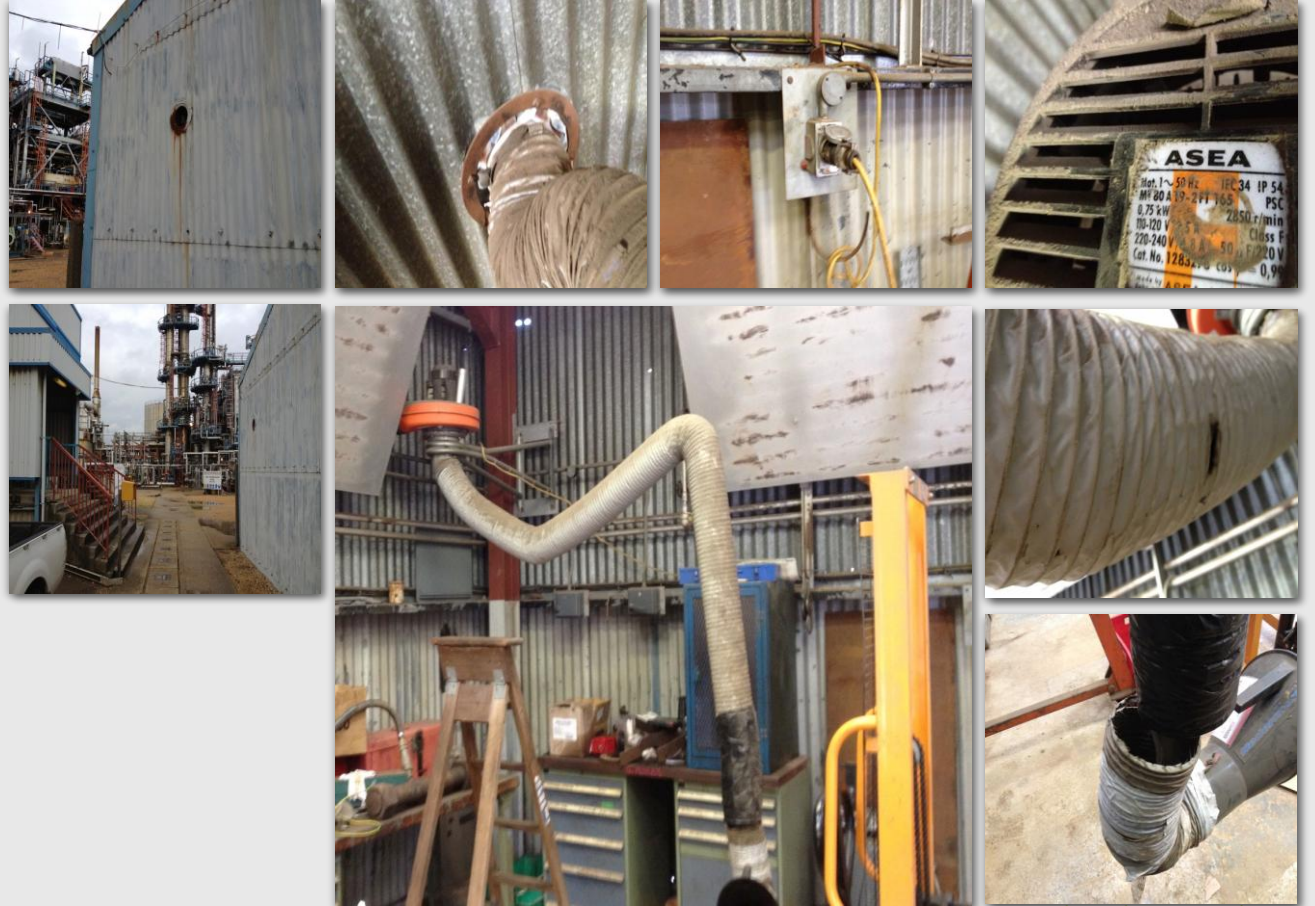
1. Visual assessment



On the day...

Three stages of TExT...

1. Visual assessment



On the day...

Three stages of TExT...

1. Visual assessment



On the day...

Three stages of TExT...

1. Visual assessment



On the day...

Three stages of TExT...

1. Visual assessment



On the day...

Three stages of TExT...

1. Visual assessment
2. Qualitative tests
 1. Smoke



On the day...

Three stages of TExT...

1. Visual assessment

2. Qualitative tests

1. Smoke

2. Dust lamp



On the day...

Three stages of TExT...

1. Visual assessment
2. Qualitative tests
3. Quantitative Tests



On the day...

Three stages of TExT...

1. Visual assessment
2. Qualitative tests
3. Quantitative Tests
4. Judgement

Root causes of failure...

- A fan issue, either not operating correctly or undersized,
- Filter issue such as a blockage of passing dust,
- A user issue or, and this is probably the most common reason for a failure
- The design of the system is inadequate in the first place.

On the day...

Three stages of TExT...

1. Visual assessment
2. Qualitative tests
3. Quantitative Tests
4. Judgement

Other potential causes of failure...

- Risk of explosion or explosion venting not correct.
- Obvious electrical faults.
- Filters passing dust.
- Users not correctly using the system.
- Un-controlled other sources in the work area associated with the process.

The report...

1. Did it Pass or Fail?
2. If it failed, what do I need to do?

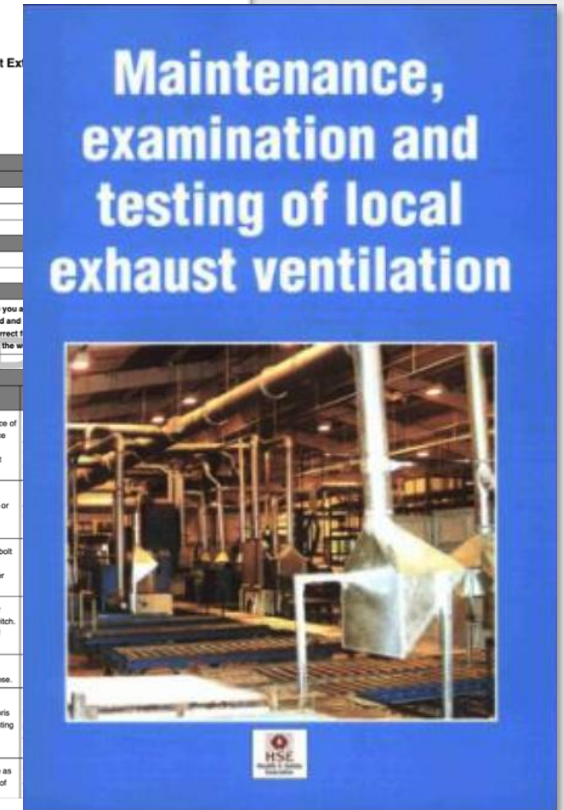
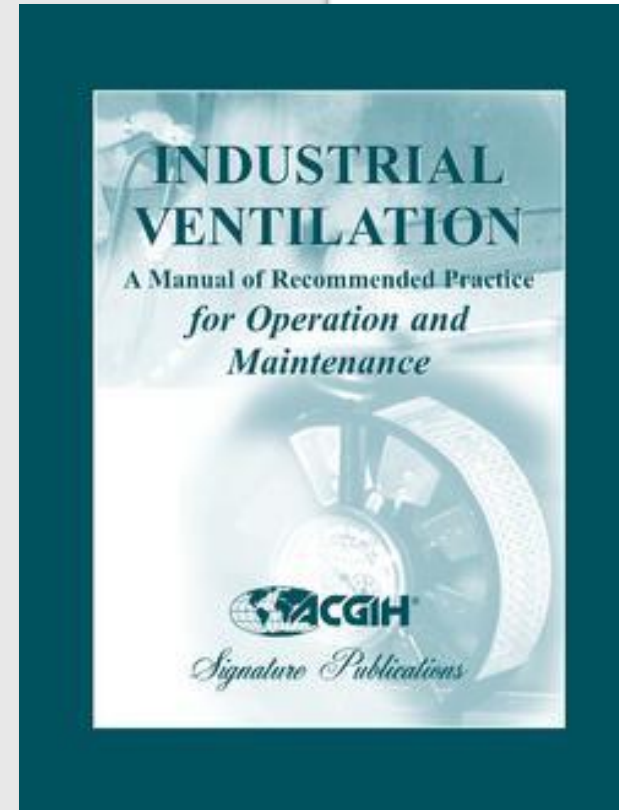
Concise, waffle free, reports that are clearly laid out and easy to follow.

Follow up & support...

Can they offer on-going support?

Servicing in accordance with:

- manufacturers guidance,
- BESA SFG20 servicing schedules or
- industry best practice.



Summary

- Evidence of competence
 - Qualifications
 - Experience
 - Previous works/references

- Clear plan of works with
 - Methodology
 - RAMS

- Clear concise reports with
 - Evidence of the result
 - Action plan

- On-going support