

HSE's Expectations & Perspective

Rob Williams CFFOH
HM Specialist Principal Inspector

7th October 2025





Expectation No 1

That exposure to
substances
hazardous to health
is *“Adequately
Controlled”*



Inadequate Respirable Crystalline Silica (RCS) Control



What is Adequate Control Under COSHH

- Exposures not exceed any WEL
- ALARP – carcinogens / asthmagens
- Principles Good of Control applied

e.g. design & operate processes to minimise emission & spread; controls proportionate to risk; choose most effective & reliable controls; consider all exposure routes; IIT



Controlling airborne contaminants at work

A guide to local exhaust ventilation (LEV)



HSG258 (Third edition)
Published 2017

This is a free-to-download, web-friendly version of HSG258 (Third edition, published 2017). This version has been adapted for online use from HSE's current printed version.

You can buy the book at <https://books.hse.gov.uk/> and most good bookshops.

ISBN 978 0 7176 6613 3
Price £20.00

This book provides guidance on the design of new local exhaust ventilation (LEV) equipment. It describes the principles of deciding on, designing, commissioning and testing effective LEV.

This guidance is written for employers who use or intend to use LEV. The guidance will also help suppliers of LEV, managers, trade union and employee safety representatives. All of these groups need to work together to provide, maintain and use effective LEV and to reduce exposure from the inhalation of hazardous substances.

The book contains information about the roles and legal responsibilities of employers and suppliers; competence; principles of good design practice for effective LEV hoods and their classification; ducts, air movers; air cleaners; and system documentation – with checking and maintenance schedules and the marking of defective equipment.

It also includes guidance on the specification of LEV; commissioning; zone marking; the user manual and logbook; testing and hood labels.

This third edition has been updated and contains minor amendments and clarifications, but the advice is broadly unchanged and includes the updates made in the second edition based on feedback from industry.

PROTECTING PEOPLE
AND PLACES FOR

50 YEARS
HSE

Adequate Control

Just follow HSE guidance?

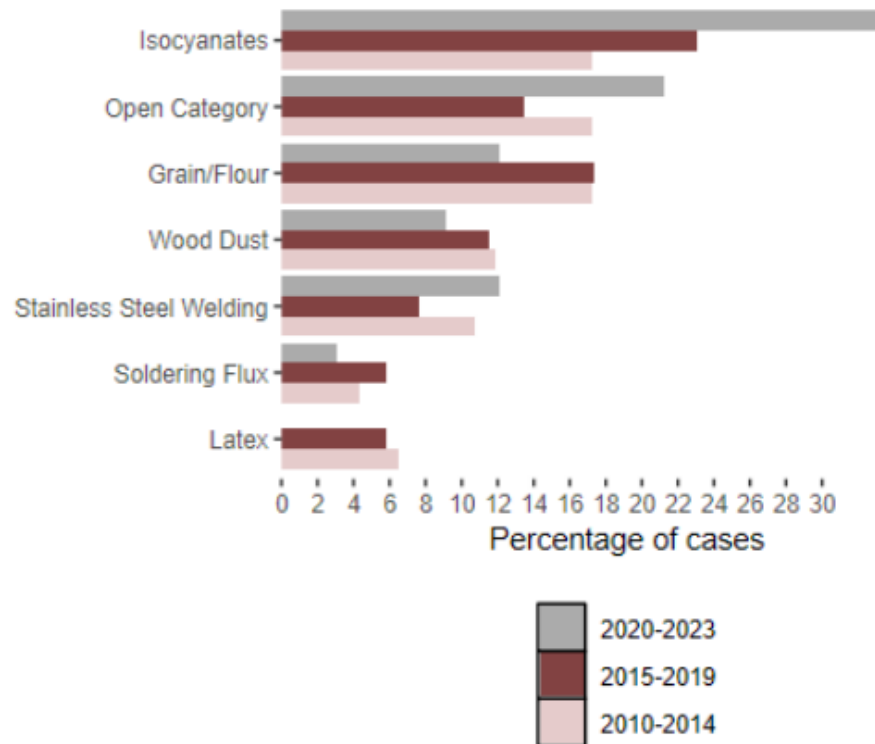


**PROTECTING PEOPLE
AND PLACES FOR**



**Isocyanate
paint spraying**

Isocyanates Health Risks



- There were an estimated 20,000 new cases of self-reported 'breathing or lung problems' each year caused or made worse by work according to the Labour Force Survey (LFS) averaged over the last three years.





**PROTECTING PEOPLE
AND PLACES FOR**



Adequate Control (HSG261)

Elimination: If reasonably practicable.

Substitution: If reasonably practicable.

Engineering: Extracted spray room.

Admin: Controlled Access

Welfare facilities, IIT

PPE: RPE – constant flow airline
Type 5 Overall / gloves

**Health
Surveillance**

**Biological
Monitoring**





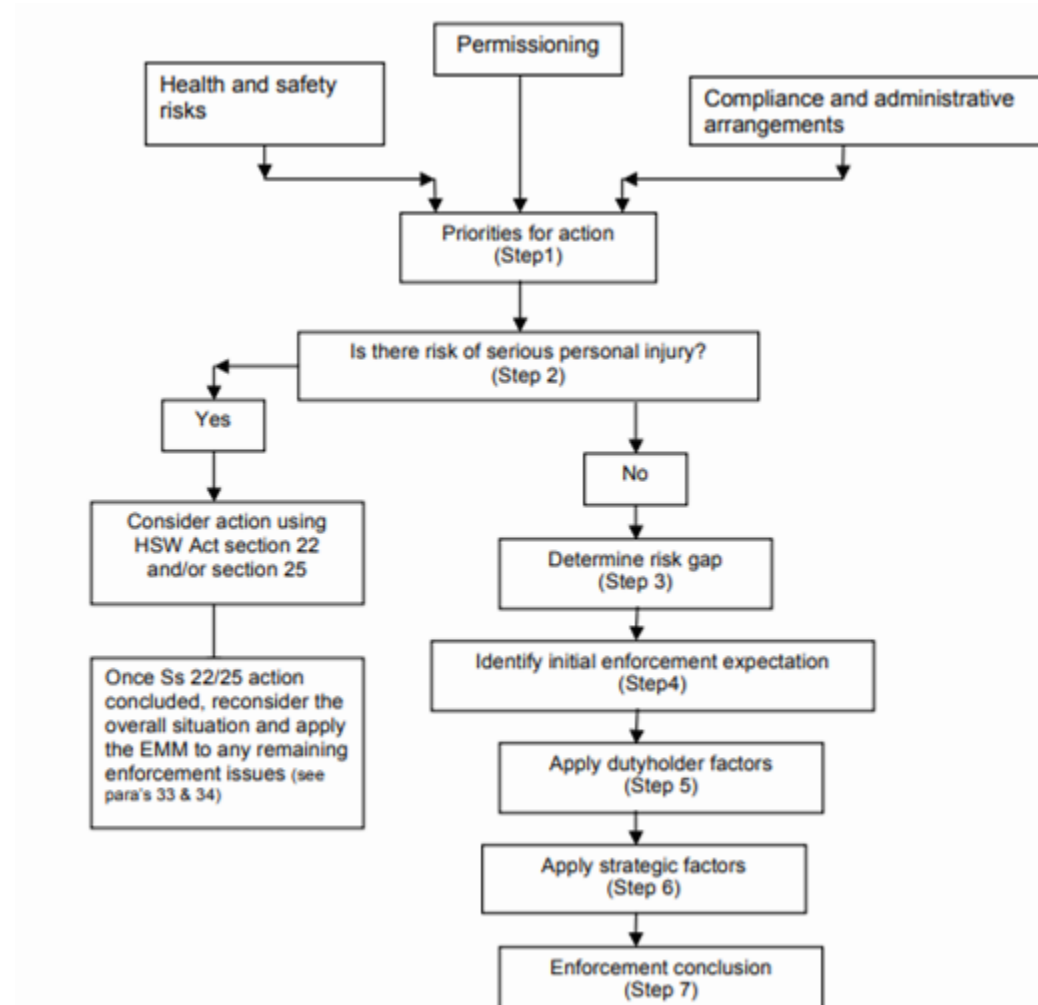
Spraying Paints Containing Isocyanate



How HSE enforces

- Prohibition Notices
- Improvement Notices
- Notification of Contravention
- Advice
- Prosecution

Enforcement Management Model (EMM) Overview



Determining the Risk Gap

Actual Risk Vs. Benchmark Risk

- **Likelihood** of someone coming to harm doing that activity
- **Consequence** of the action
- Benchmark will change either the likelihood or the consequence

Measure of actual risk (where the dutyholder is)	Consequence	Likelihood	Dutyholder complies with or exceeds legal standard			Dutyholder complies with or exceeds legal standard				Dutyholder complies with or exceeds legal standard			
	Nil	Nil											
	Minor injury	Remote											
		Possible											
		Probable											
	Significant injury	Remote											
		Possible											
		Probable											
	Serious personal injury	Remote											
		Possible											
Probable													
Likelihood		Possible	Remote	Nil/neg	Probable	Possible	Remote	Nil/neg	Probable	Possible	Remote	Nil/neg	
Consequence		Serious personal injury			Significant injury				Minor injury/ Nil				
	Benchmark risk (where dutyholder should be)												

Risk gap:	Extreme	Substantial	Moderate	Nominal
-----------	---------	-------------	----------	---------

Isocyanates



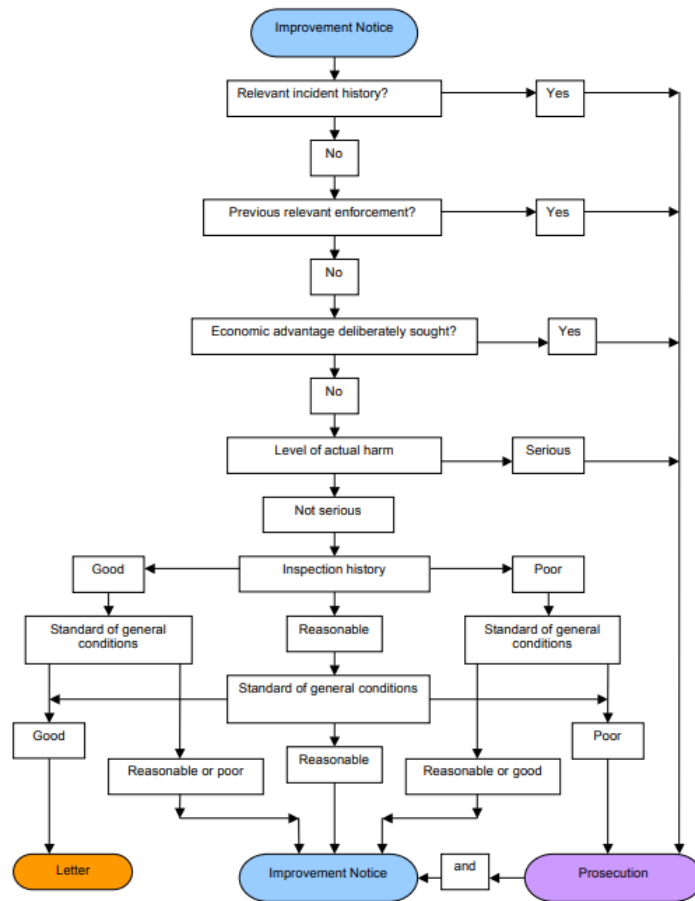
					Probable	Possible	Remote	Nil/Negligible	
3	Exposure to Respiratory Sensitisers R42/H334	Inhalation	Occupational asthma, Extrinsic allergic alveolitis. (EAA).	Serious	Repeated and/or prolonged exposure	Repeated low level or single high level exposures	Single/occasional low level exposure	Exposure reduced to ALARP or ALARP below WEL value where available	
Since individuals can become sensitised by exposure to these substances yet cannot be identified in advance, AND exposure of a sensitised person can result in a massive adverse health effect consider the consequence of exposure to be serious. Topic Inspection Pack & OG are in development.									

Initial Enforcement Expectation

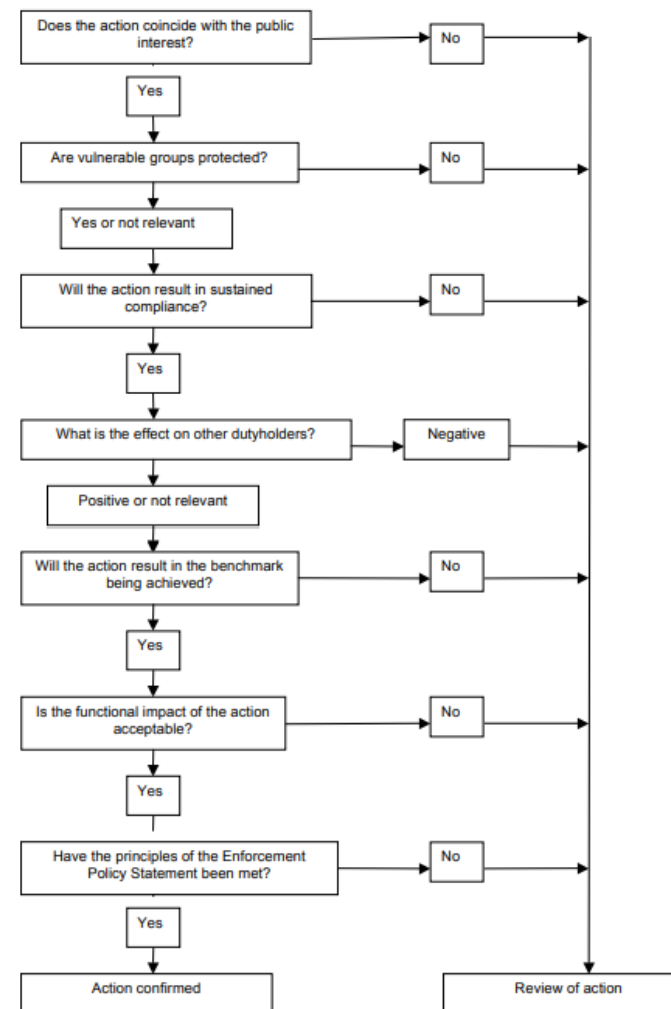
Table 5.1 Health and safety risks: Initial enforcement expectation

Risk gap	Standards	Initial enforcement expectation (to secure compliance with the law)	Consider prosecution?
Extreme	Defined	Improvement Notice	Yes
	Established	Improvement Notice	Yes
	Interpretative	Improvement Notice	
Substantial	Defined	Improvement Notice	
	Established	Improvement Notice	
	Interpretative	Letter/inspection form	
Moderate	Defined	Improvement Notice	
	Established	Letter/inspection form	
	Interpretative	Letter/inspection form	
Nominal	Defined	Verbal warning	
	Established	Verbal warning	
	Interpretative	Verbal warning	
Immediate risk of serious personal injury has already been considered and dealt with where appropriate.			

Dutyholder Factors



Strategic Factors



Operational guidance

<https://www.hse.gov.uk/foi/internalops/index.htm>

Help us to improve the website - [give your feedback](#).

[Home](#) > [Notify HSE](#) > [Freedom of Information](#) > [Operational Guidance](#)

Freedom of information

[Operational guidance](#)

[New operational guidance](#)

[Operational Circulars \(OCs\)](#)

[Operational Minutes \(OMs\)](#)

[Sector Information Minutes
\(SIMs\)](#)

[Permanent manuals](#)

[Semi-permanent circulars
\(SPCs\)](#)

New operational guidance

Titles

[Transport and Public Services Unit work plan 2022-23: Inspections to assess the management of asbestos in school buildings \(PDF\)](#)

[Welfare standards for construction work \(PDF\)](#)

[Waste and recycling Sector work plan 2022-23: Targeted inspections \(PDF\)](#)

[Manufacturing Sector work plan 2022-23: Occupational lung disease \(OLD\) caused by wood dust in wood working and furniture making industries \(PDF\)](#)

[Agriculture sector workplan 2022 to 2023: Inspection in conjunction with agriculture compliance events \(PDF\)](#)

[National Fairground Inspection Team \(NFIT\) Sector Workplan 2022 to 2023 \(PDF\)](#)

[Onshore decommissioning and dismantling of offshore installations - Intervention planning \(PDF\)](#)

[The Pipelines Safety Regulations 1996 \(PDF\)](#)

[Manufacturing sector work plan 2021 to 2022: Impact Evaluation Inspections: Occupational Lung Disease \(OLD\) caused by wood dust \(PDF\)](#)

[Moving and handling construction materials \(PDF\)](#)



Isocyanate Paint Spraying

Further Initial Enforcement Expectations (IEE's)

- Improvement Notices – Poor control, exposure likely – e.g lifting visor, no LEV at paint mixing, ignoring clearance times, lack of biological monitoring, TExT inadequate.

Expectation No 2

Test the LEV System
against reliable
benchmark (and action
recommendations)



Expectation No 3

Appoint Competent Person







Health & Safety at Work Act s3

“It shall be the duty of every employer to conduct his undertaking in such a way as to ensure, so far as is reasonably practicable, that persons not in his employment who may be affected thereby are not thereby exposed to risks to their health or safety.”

Management of Health & Safety at Work, Reg7

“Every employer shall, appoint one or more competent persons to assist him in undertaking the measures he needs to take to comply with the requirements and prohibitions imposed upon him by or under the relevant statutory provisions”

“A person shall be regarded as competent.... where he has sufficient training and experience or knowledge and other qualities.”



Intelligent Customer



Inspection Workplan – BIG 5

- Asbestos “Duty To Manage”
- Health surveillance – where appropriate
- Musculoskeletal Disorders (MSD)
- Noise
- Dust

Thank you

Robert.williams@hse.gov.uk