



10th & 11th  
September  
2024

Hosted by



British Occupational  
Hygiene Society

# HSE Update on LEV Research, Policy and Enforcement

**Rob Williams (HSE Specialist Inspector)**



# **HSE Update**

**September 2024**  
**Robert Williams CFFOH**  
**HM Specialist Inspector**

# Agenda

- 1. Planned Inspections**
- 2. DCM Intervention**
- 3. HSE LEV Work**

## Local Exhaust Ventilation (LEV)


---

- Business Milestone 2023/ 24: *'We will also build awareness of using local exhaust ventilation effectively as a workplace control.'*
- Question: *What does good LEV look like for.*
  - Enhancing Expectations e.g. *Commissioning*
  - Recirculatory Systems
  - Intelligent Customer e.g. *raising standards and knowledge for LEV buyers*
  - Training and Competency

## Inspection Delivery Plan - 2024/2025



### Focused Health priorities 2024-2025

Occupational Lung Disease	Other health effects
Silica	Legionella
Wood dust	DCM
Dust in bakeries	Lead
Isocyanates	WRS....esp. 'demands'
 Health Surveillance where required	

# Inspection Delivery Plan - 2024/2025

---

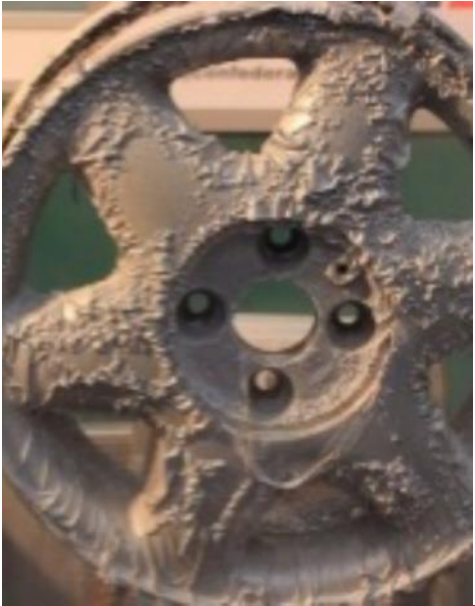
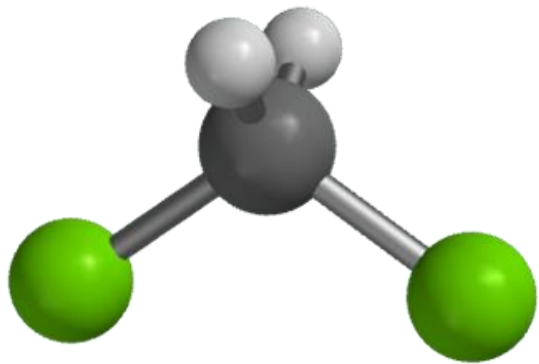
## Scheduling.....

Asbestos/noise/MSD/HS, silica, wood dust, lead, DCM at construction sites  
Asbestos/noise/MSD/HS in “factories” aka ‘Health Focused inspections\*’  
Specific focus re construction e.g. cladding  
Licensed asbestos inspections  
Asbestos DTM in public sector  
Radiation

Silica in foundries  
Wood dust in woodworking  
Legionella in plastic manufacture

Isocyanates in MVR  
Lead from bio monitoring  
Dusty ingredients in bakeries  
WRS in ambulance trusts

# Alloy Wheel Stripping Intervention 2023/2024



**Dichloromethane  
(aka methylene  
chloride)**

Processing

Clean

GUIDANCE FOR TEXT ASSESSORS

**ILEVE**  
INSTITUTE OF LEADERSHIP  
EVALUATION

**DICHLOROMETHANE**  
*(aka methylene chloride) (CAS number 75-09-2)*

From January 2024, the HSE will undertake inspections at alloy wheel stripping sites suspected of using Dichloromethane (DCM), also known as methylene chloride.

This means you may be asked by clients to go to a site and look at potential control measures to stop anyone getting exposed. From the day you will need to carry out your own risk assessment of the situation, and implement the necessary controls to protect yourself. You need to be particularly careful as DCM is extremely flammable, volatile, highly flammable and can lead to high airborne concentrations which can cause dizziness, impaired consciousness and death.

[Download the guidance for employers and safety data sheets \(SDS\) for DCM.](#)

[Download the guidance for employers and safety data sheets \(SDS\) for DCM.](#)

**Key points**

1. Understand the hazards from the use of DCM and any other hazardous chemicals used in the stripping process.
2. Do a risk assessment to determine whether it is safe to approach the stripping process.
3. Advise any risk to prevent it working, such as the risk.

**WHAT IS DCM?**

- A colorless and odorless liquid.
- Its highly volatile and small volume can give off large amounts of vapour.
- The vapour is heavier than air and can collect in a confined space.

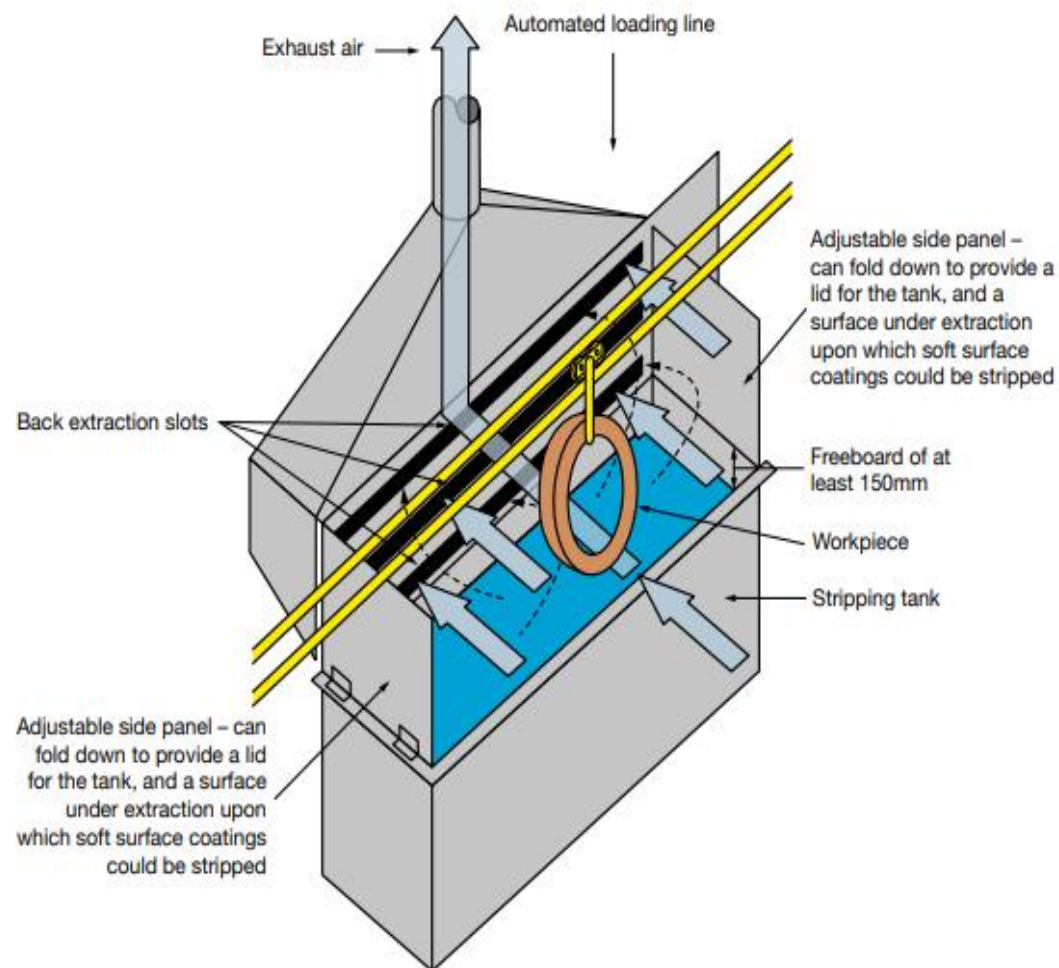
**HOW DOES IT AFFECT YOU?**

- Breathing in DCM vapour can affect the central nervous system, causing symptoms such as headaches, dizziness, loss of coordination, nausea, and impaired consciousness (drowsiness). At high concentrations, DCM can cause death.
- DCM can burn the skin or cause irritation leading to dermatitis. It is also absorbed via the skin.
- DCM mixed down to a liquid solution with the body, which reduces the flow of oxygen. This may cause severe symptoms for those with heart or lung problems.
- DCM is suspected of causing cancer.
- Used on the inside and back of the eye.

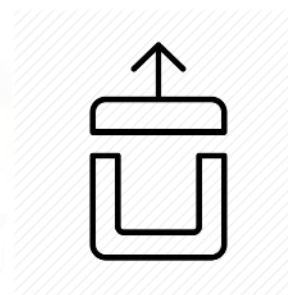
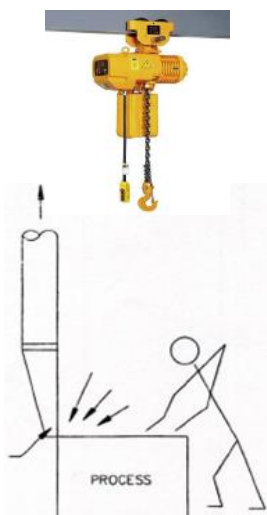
Exposure can lead to impaired consciousness and death.



# Alloy Wheel Stripping Intervention 2023/2024



Local Exhaust  
Ventilation (LEV)





# Alloy Wheel Stripping Intervention 2023/2024

---



Enclosed Space



Outside



Is the ventilation  
adequate?

# HSE Projects



## Recirculatory Project





## Recirculatory Project





# Commissioning



## Commissioning – Simple Systems







Commissioning – Complex



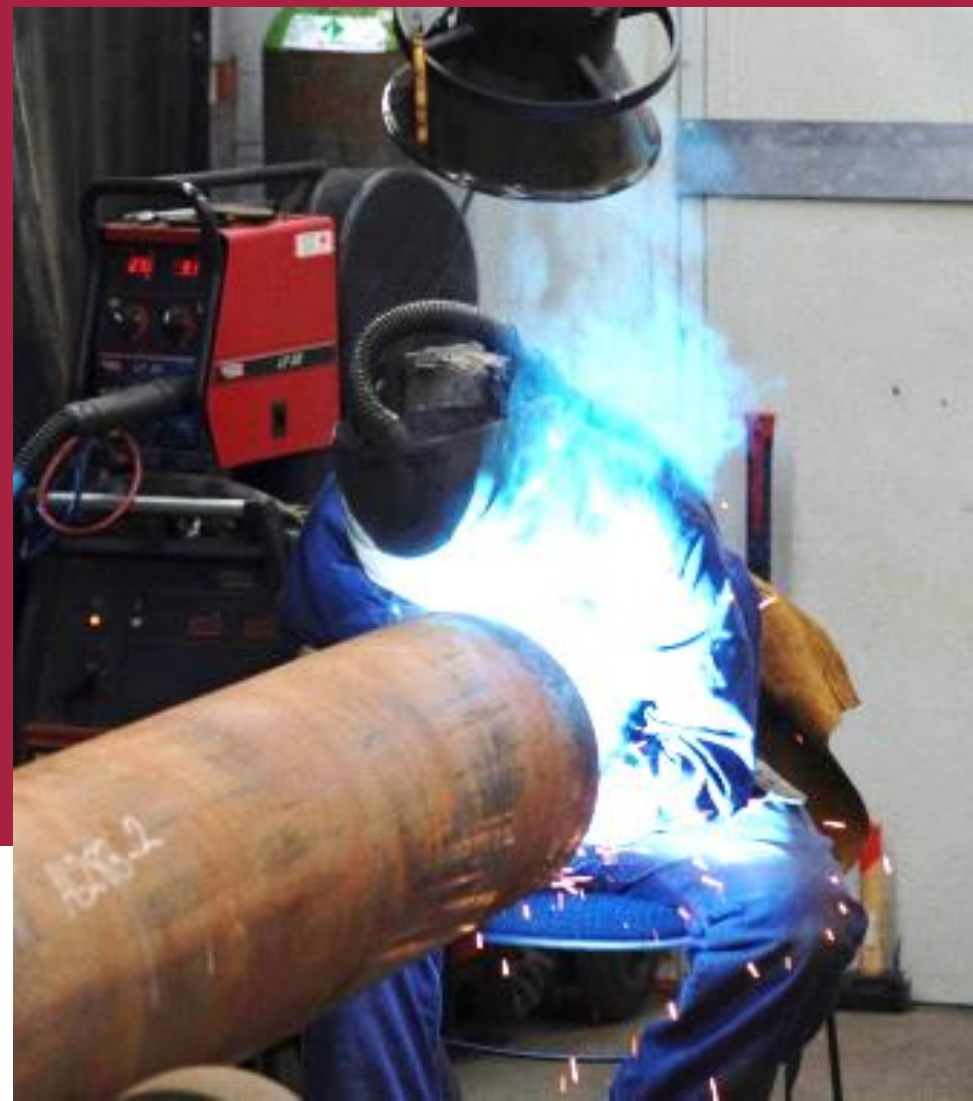


Commissioning – Complex or Simple?

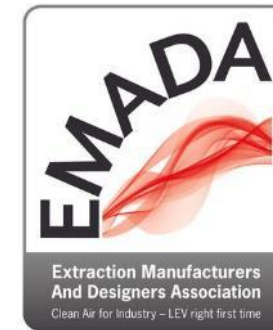




Intelligent Customer



# StakeHolders





**Health and safety  
inspectors**



**Enforcement &  
Guidance**

**VIRTUALLY  
TOGETHER** 



**Thank you**