

**Registration and Beyond:  
Exposure Scenarios and Safe Handling  
Advice Conference 30 September – 1  
October 2009, Brussels**

**Frank Barry, ETUI**



# **Overview of where we are.**

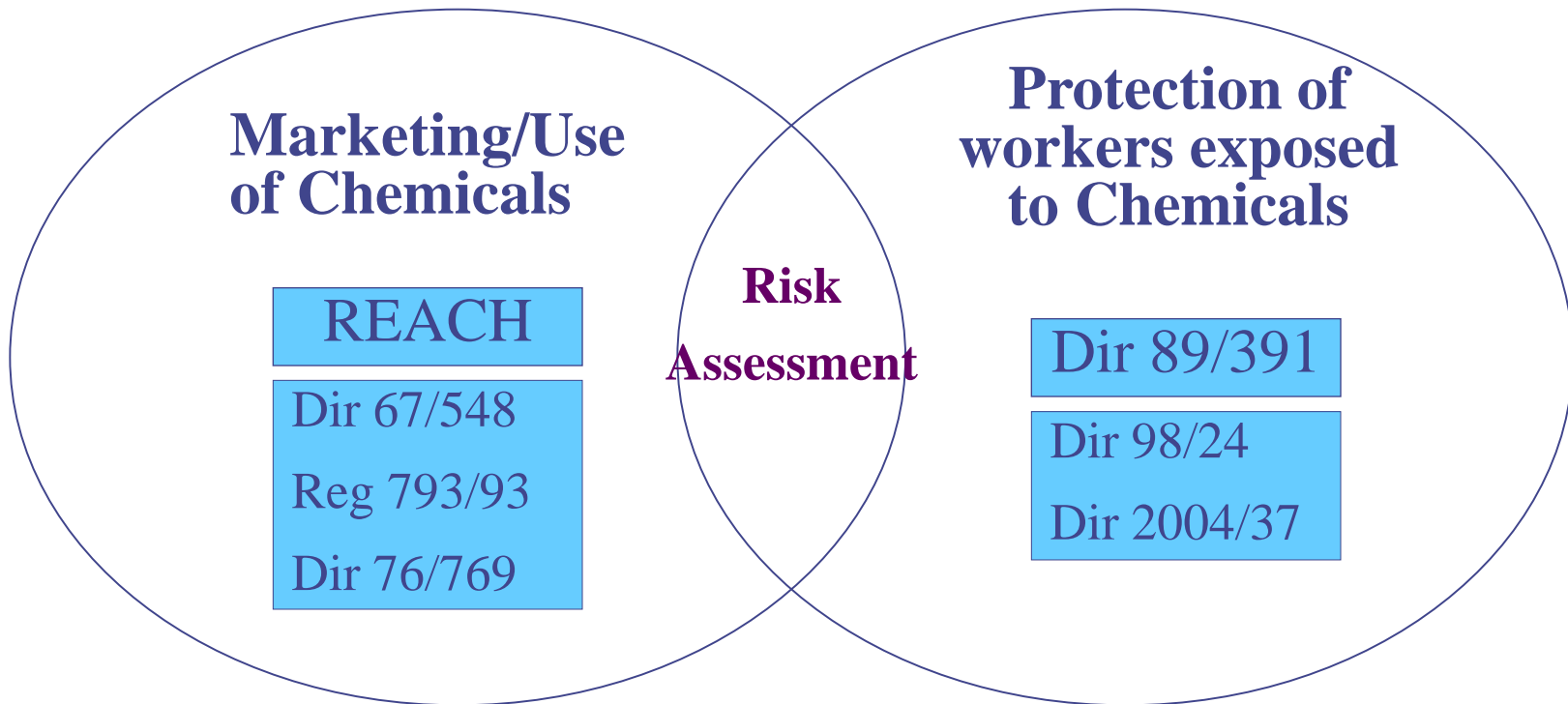
- ◆ **Chemicals & Occupational diseases in EU**
- ◆ **Risk Assessment in OSH legislation**
- ◆ **Risk Assessment under REACH Comparison between Chemical Agents Dir 98/24 and REACH**
- ◆ **Role of workers and their reps**
- ◆ **Conclusions**

# **Chemicals and Occupational diseases/fatalities in Europe**

## **Background:**

- 18 % of workers in EU-25 declare they handle hazardous substances and 20.5 % breath in toxic vapours (Dublin Foundation, 2006)**
- In 2001, there were more than 26 000 deaths in the 15 EU states due to exposure to hazardous chemicals (ILO, 2005)**
- One out of every three occupational diseases recognised each year in the 15 EU States are related to exposure to chemicals (based on Eurostat data, 2004)**

# REACH and the OSH legislation: Two co-existing legislations



REACH, Art 4 (2) : This Regulation shall apply without prejudice to Framework Dir 89/391, CAD, Dir 98/24, CAR, Dir 2004/37,

# Principal obligations for the employers:

## Chemical Agents Directive (CAD 98/24/EC):

- **Determine whether any hazardous chemical agents are present in the workplace**
- **Assess any risk to the H&S of workers arising from their use**
- **Ensure that the risk is eliminated or reduced to a minimum (hierarchy of prevention and protection measures)**

- **Carcinogens Directive (2004/37/EC):**
- **Substitution with a substance or preparation or process that is less hazardous**
- **Control measures include closed systems or keeping the exposure as low as is technically possible.**

- **REACH Objectives**

- 

- **To achieve a high level of protection for human health and the environment**
- **To promote the efficient functioning of the EU market and enhance the competitiveness of the EU Chemical Industry**

# REACH, basic principles ?

- **Moving the burden of proof of safety to the Manufacturer:**
- **Manufacturers of chemicals have to prove that their substances can be used safely on the market and in the workplace**
- **No data = No market**
- **Manufacturers must now register their substances and provide the appropriate data if they want to substances on the market**

# REACH, what has to be done to comply?

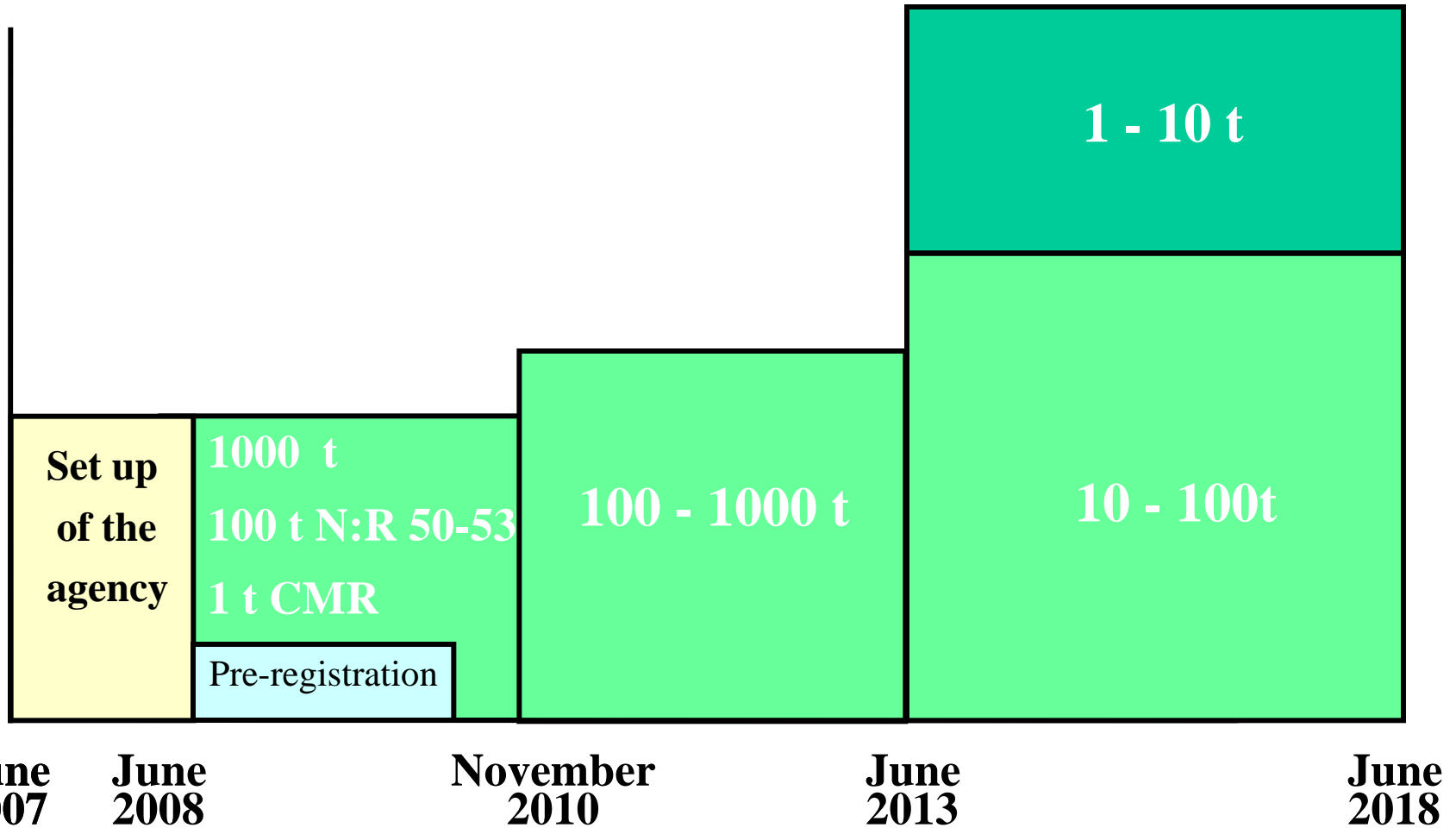
- **Registration:** Manufacturers of chemicals > 1 tpa will be required to register their substances to demonstrate they can be used safely
- **Evaluation** of some substances by Member States / Chemical Agency
- **Authorisation** only for substances of very high concern

# Registration:

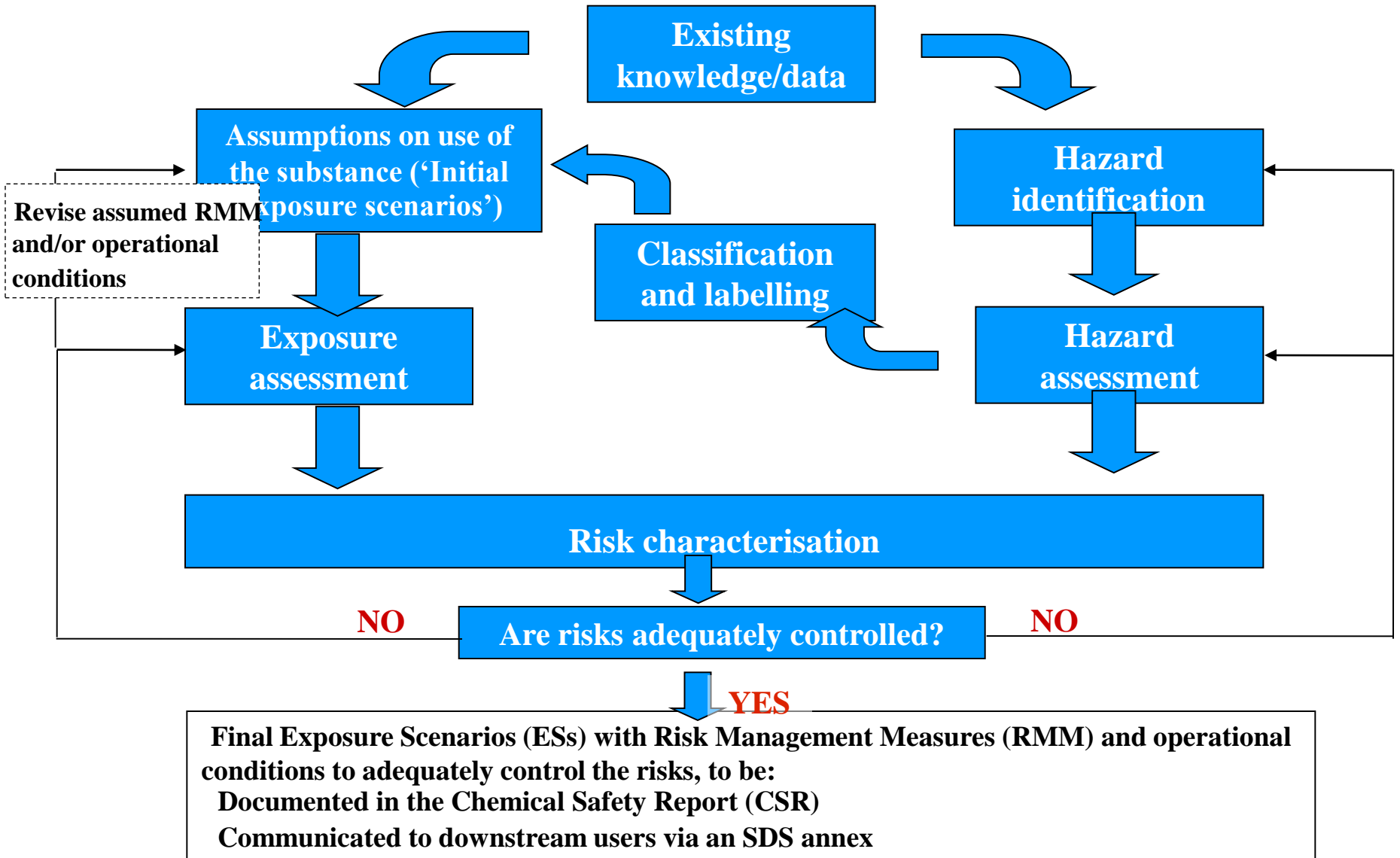
- To day we have somewhere in the region of 92,000 pre-reg substances, for example Ireland has a pre-reg of 3250 substances
- Manufacturers/Importers collect and submit data through a registration dossier:
  - Technical dossier (>1t/y)
  - Chemical Safety Report (> 10t/y)
- The European Chemicals Agency receives the registration dossiers and manages the database

*Data required depends on the production volume*

# Registration Deadlines



# Chemical Safety Assessment (CSA)



# Comparison risk assessment Dir 98/24 and REACH

<b>Directive 98/24/EC</b>	<b>REACH</b>
<b>All hazardous chemicals present in the workplace (= irrespective of volume)</b>	<b>Only for chemicals &gt; 10t/y</b>
<b>Workplace specific</b>	<b>Substance specific</b>
<b>Obligation on the employer</b>	<b>Obligation on the manufacturer/importer/ downstream user</b>
<b>Mandatory consultation and participation of workers</b>	<b>Risk Management Measures must be indicated in SDS</b>
<b>Occupational Exposure Limit Values (OELs)</b>	<b>Derived No Effect Levels (DNELs)</b>

# Roles of workers or their Representatives at company level under REACH?

- **In the first instance, Employers must realise that they still have obligations both under REACH and OSH legislation to protect workers**
- **Workers Reps have the right to examine if the intended uses are covered by the Exposure Scenarios set out in Safety Data Sheet (SDSs)**
- **Workers Reps can check if Employers apply the Risk Management Measures provided for in Safety Data Sheets**
- **Workers Reps can challenge proposed Risk Management Measures if they do not think that they are adequate enough**
- **They can ensure that REACH is applied without prejudice to OSH legislation (i.e. compliance with existing OELs and the Substitution Principle)**

# Conclusions :

- Risk assessments under REACH and Dir 98/24/EC are complementary to each other
- REACH is an excellent opportunity to inform employers that they have obligations to fulfil under worker protection legislation
- REACH will provide the missing data on the properties of chemicals (labelling improvements)
- REACH will improve the distribution of information up & down the supply chain (Safety Data Sheets)
- REACH will help the progressive substitution of the most harmful substances via restrictive and authorisation procedures
  - Risk assessment under the Chemical agents directive will be facilitated

- **Valuable tools available under REACH**

- The provision of the Chemical Safety Assessment to determine how safe the substance is.**

- **The Provision of the Chemical safety report (CSR) documents the risk assessment carried out**

- **The provision of the Safety Data Sheet for each substance provides the means to communicate and provide safety information to workers and Downstream Users**

# Further info :

**<http://hesa.etui-rehs.org> >Dossiers >  
Chemicals**

**on REACH:**

**[http://reach.jrc.it/guidance\\_en.htm](http://reach.jrc.it/guidance_en.htm)**

**<http://echa.europa.eu/>**

**on Chemical Agents Directive:**

**[http://ec.europa.eu/employment\\_social/health\\_safety/publications/ke6805058\\_en.pdf](http://ec.europa.eu/employment_social/health_safety/publications/ke6805058_en.pdf)**